

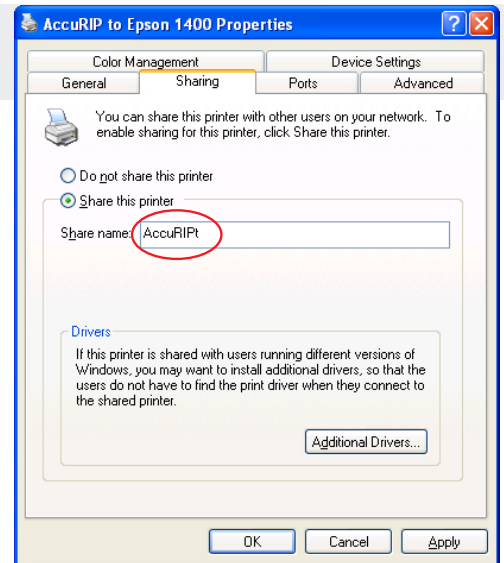
AccuRIP is a Network RIP

PC to PC sharing...

PC From the hosting Windows Computer (the one that AccuRIP is installed on) go to your Control Panel and choose Printers and Faxes (XP), Hardware & Sound>Printers (Vista), or Devices & Printers (Win 7).

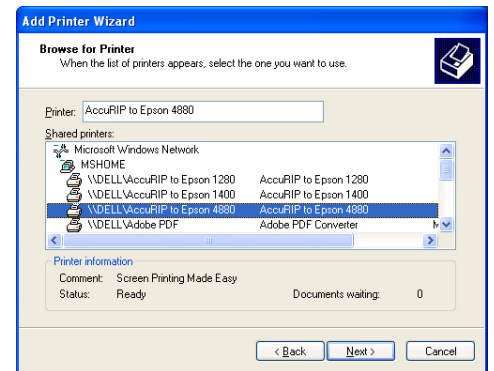
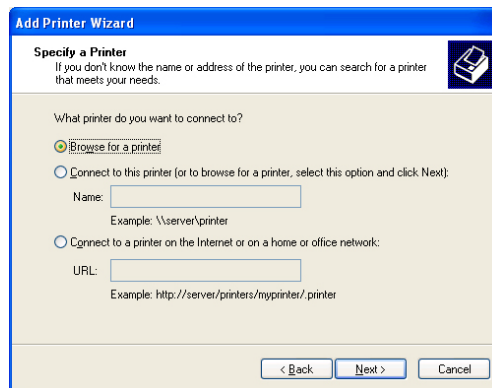
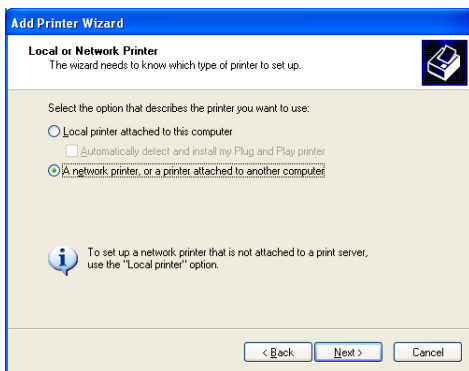
Right Click the AccuRIP print driver and choose "Share"
(the default name is AccuRIPt). Windows 7 users Right Click Printer Properties and Choose "Sharing". Click the "APPLY" button and "OK".

Your print driver is now shared and available for other computers on the network to add and print to.



From a Networked Computer

On another PC on your Network open the "Printers" Section, select Add a Printer. Add a Network Printer. Click NEXT. Now from the "Specify a Printer Window", choose "Browse to a printer". Click NEXT. Select the proper AccuRIP to Epson Shared Driver. Click NEXT and complete the process. The Print Driver will install. Start using AccuRIP!



Troubleshooting when sharing drivers between different Operating System versions is not working.

If the non-hosting computer asks for a Driver use the Windows Driver provided and located in the Sharing AccuRIP Folder in the Windows Drivers Folder, RIGHT CLICK the AccuRIP.inf and choose INSTALL. Return to the Control Panel / Printers and start the ADD PRINTER process again.

NOTE: AccuRIP Software is designed to work with (1) Epson model at a time and shared with any or all users across your Local Area Network. If you wish to use AccuRIP for additional Epson models contact Freehand or your Reseller to purchase an additional User License.