

Putting Type on a Path

One really simple thing to do with your type when creating T-shirt art is to wrap the type around your image.

I'll start with a simple piece of clip art and put some type above and below the image.

I will be putting the type on the top and bottom of a circle.

Here's how!



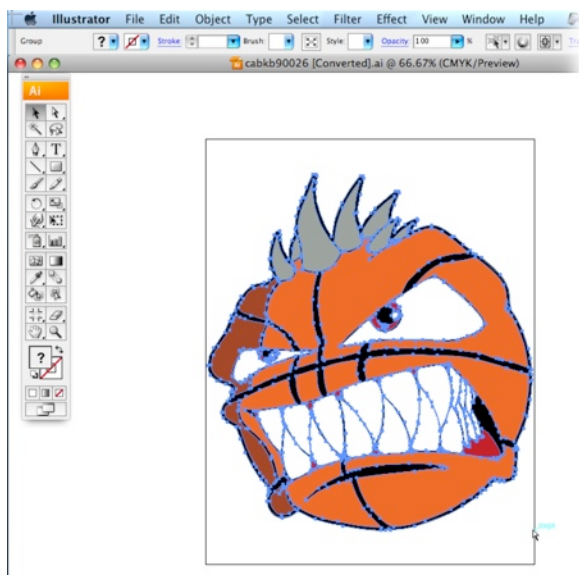
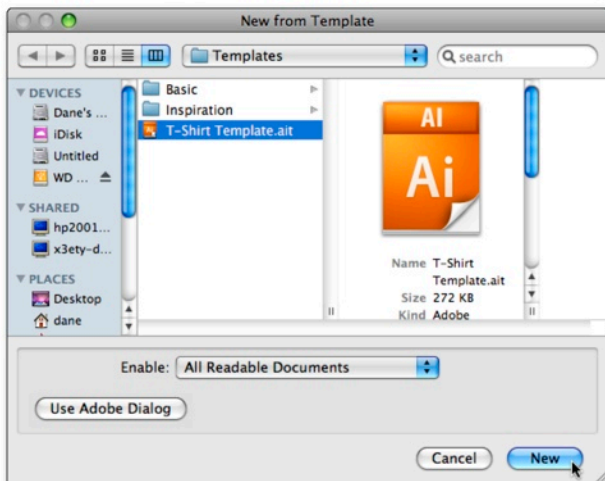
PUTTING TYPE ON A PATH

Step 1: Illustrator CS3

Open the T-shirt Template by going to FILE MENU > NEW FROM TEMPLATE.

In the New From Template window choose the T-shirt Template and click New.

If you don't have a T-shirt template yet, I'll show you how to make one in Chapter 7.

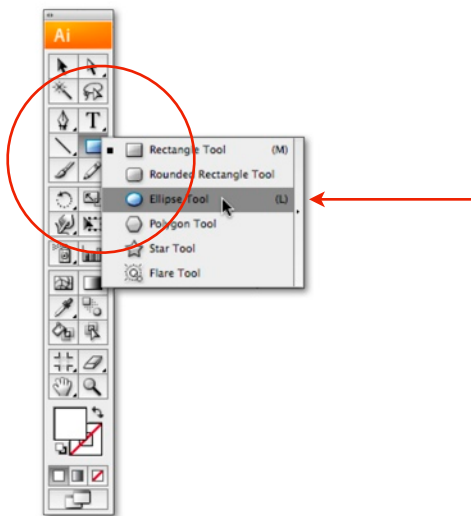
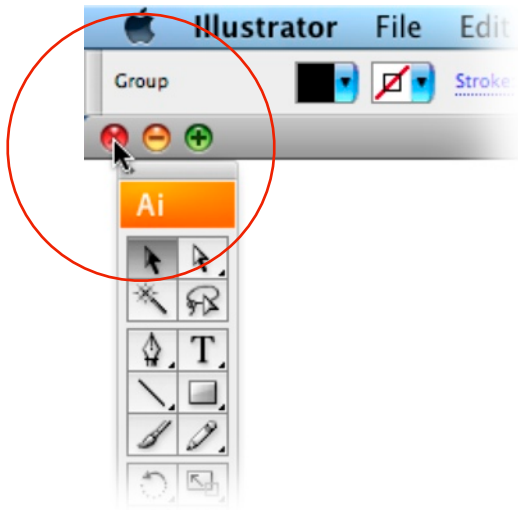


Step 2:

You should now have your template opened on the screen. Now go to FILE MENU > OPEN and find the clip art image to use.

Drag select the entire image using the Black Arrow Selection Tool.

Go to the EDIT MENU > COPY.



PUTTING TYPE ON A PATH continued

Step 3:

Close this window by “X-ing” out of it.

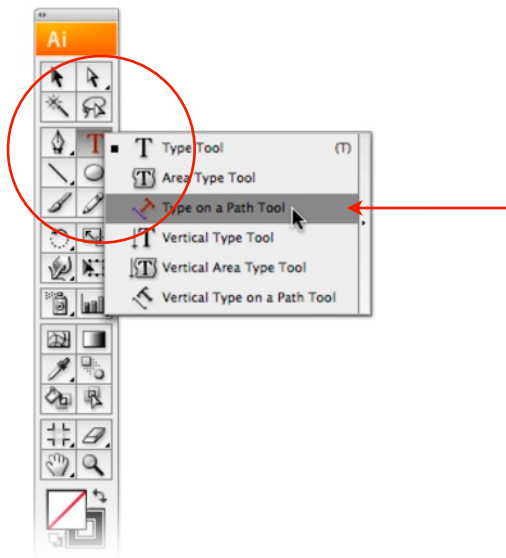
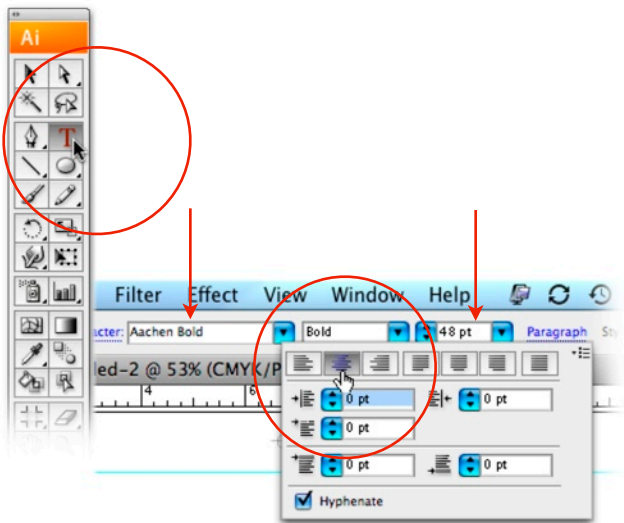
Step 4:

Go to EDIT MENU > PASTE. Now the image is in the template.

Select the Ellipse Tool by clicking and holding down the Rectangle Tool.

Step 5:

With the Ellipse Tool, drag select a circle by holding down the Shift Key to constrain it. Make the circle slightly larger than your image.



PUTTING TYPE ON A PATH continued

Step 6:

Select the Type Tool.

At the top of the screen, choose a font. Select the size of the font and click on the word "Paragraph" to bring up the Paragraph window.

Choose Align Center for your type.

Step 7:

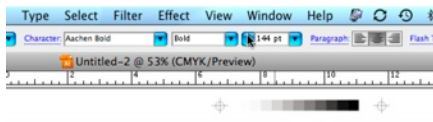
Now click and hold down the Type Tool, choose the Type on a Path Tool.

Step 8:

Click on the top of your circle. You will see a blinking insertion point at the bottom of the shape. This is OK. Simply type what you want.

This does this because the Align Center is chosen. Clicking puts a starting point. Since it's a closed path, Illustrator puts an ending point right next to it. Since we have Align Center chosen, the text goes in the middle.

No problem, I'll show you how to fix it next.



PUTTING TYPE ON A PATH continued

Step 9:

Click off of the text and select the Black Arrow Selection Tool. Grab the small blue center line and drag the type around to the top.

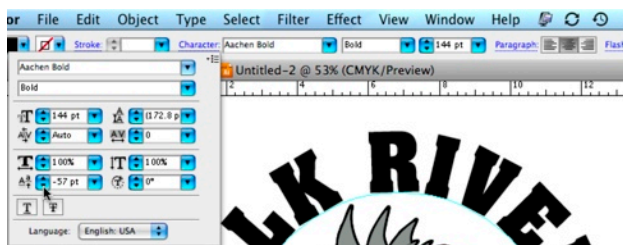
Step 10:

Your text should be at the top of the circle now.

Step 11:

Use the same Type on a Path Tool and select the type.

I made mine my type much larger by changing it's size at the top of the screen.



PUTTING TYPE ON A PATH continued

Step 12:

Using the Selection Tool. Drag select both the text and the circle.

Go to EDIT MENU > COPY.

EDIT MENU > PASTE IN FRONT.

Step 13:

Using the Type on a Path Tool, select the text. Drag the text around and down. While still holding the text, push up slightly. This will put the text on the inside of the line like you see here.

Step 14:

Click on the Character word at the top of your screen to bring up the Character window.

Put a negative number in the Baseline Shift box, or just keep clicking the small down arrow. This will move the baseline of the type. Keep doing this until the text is pushed all the way out and lines up with the top row.

Change the words to whatever you like. I chose BASKETBALL.

Colorize the text anyway you choose.

